

Threading machine RB Evol Version THREAD TAPPING

We can realize it and **evolve** it according to your production needs.



Special CNC production machine for the realization of tapping without rotation of the pieces to work.

Realization of threading inside of tubes like sleeves for building props.



Special tapping head to allow the rapid return of the tool at the end of the threading without reversal of the rotation.

Tapping tool with 4 adjustable in diameter and sharpening tools.

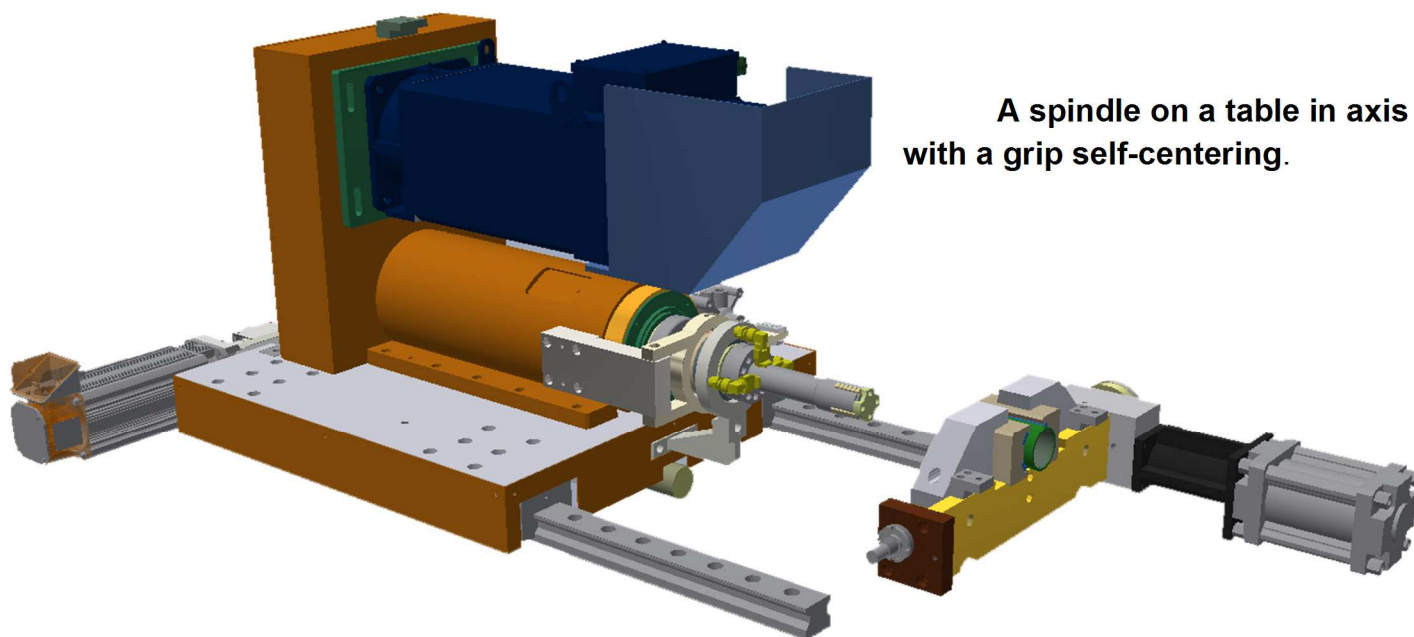
Manual loading and unloading of the pieces to realize.

Machine time for the realization of sleeve for building prop: 30 seconds.

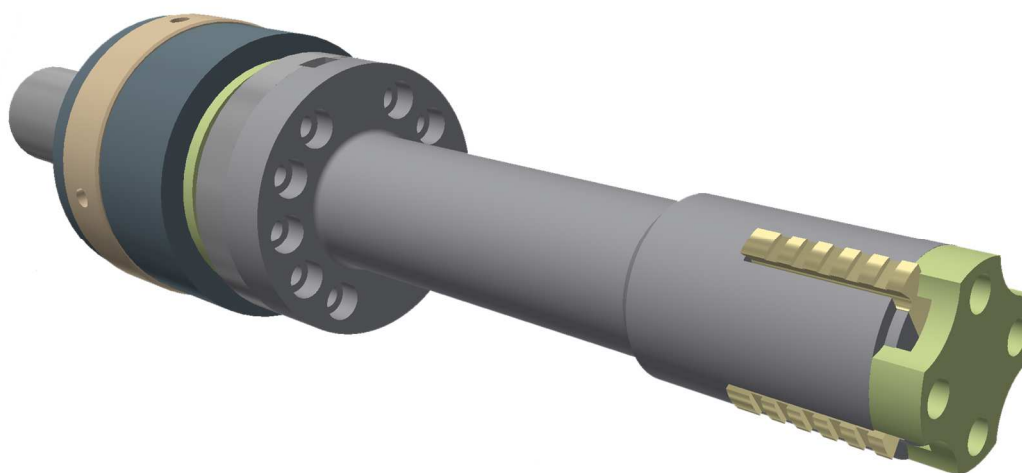
No need to CNC programming knowledge: the control interface is dedicated to your production!



1 / General principles:



**A spindle on a table in axis
with a grip self-centering.**



**Special tapping head, adjustable for diameters and pilotable in opening and
closing with moveable and regrinding tools in high-speed steel.**

CERGIL INDUSTRY S.r.l.

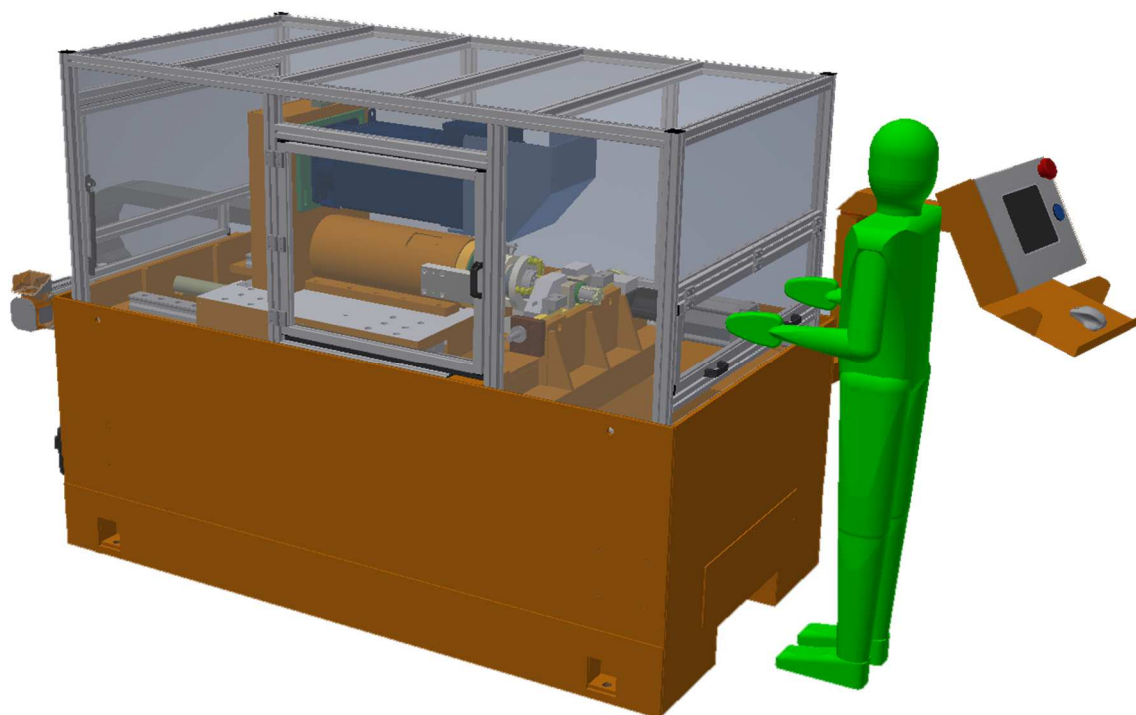
Sede legale: Via Fieno 3 – 20123 Milano

Sede operativa e stabilimento: Via degli Artigiani 2/4 27010 Localita' Prado Cura Carpignano (Pavia) IT

www.cergil.it tel. + 39 0382/ 465089 fax + 39 0382/461468

E-mail info@cergil.it

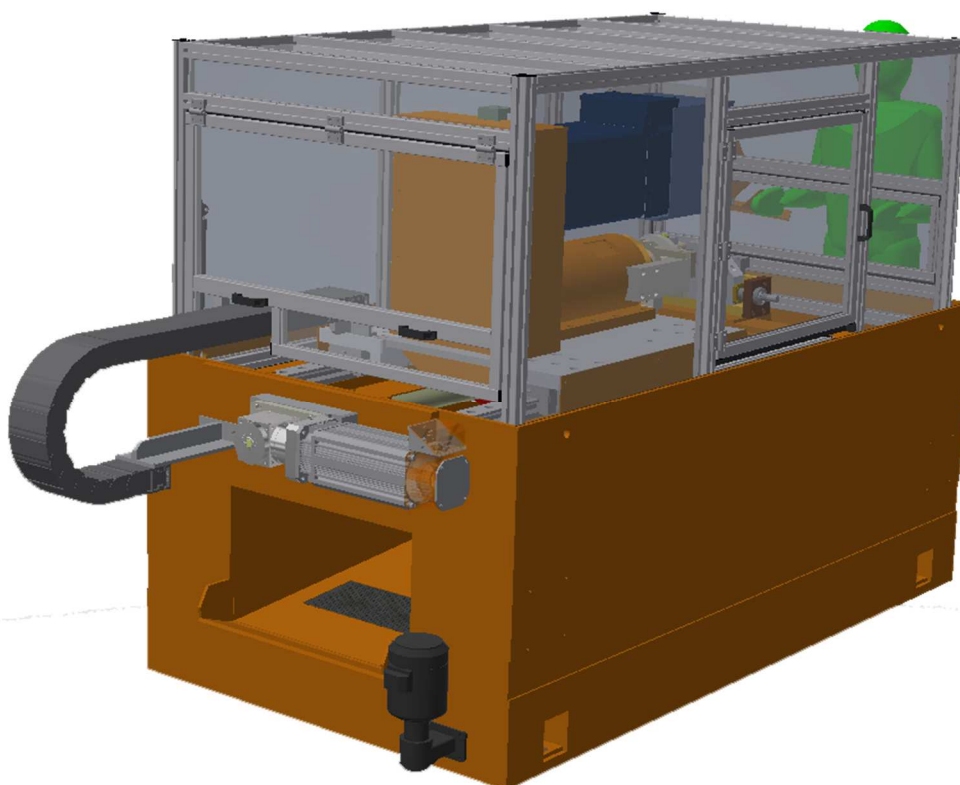
Codice fiscale e partita IVA 08295050960



Width: 1 290 mm

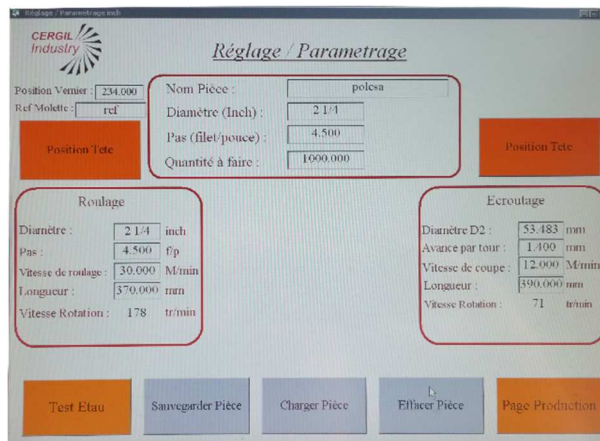
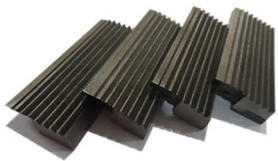
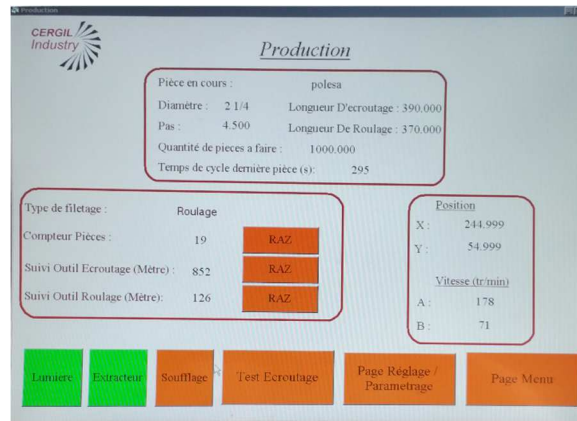
Length: 2 360 mm

Height: 1 760 mm



2 / Control panel:

The interface for the control and the management of the machine does not require programming skills.

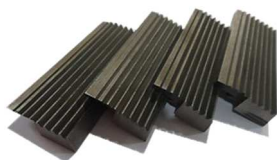


- 4 basic languages (Italian, English, French, Spanish).
- Industrial PC Touch-Panel of 15 inches on articulated arm.
- USB port.
- Remote control of the CNC and of the automatism (by networking).
- Management of tool wear.
- Backup of manufacturing settings.
- Management of threads in inches or millimeters.
- Three levels of data protection (administrator, trimmer, operator).
- General and production counters.
- Launch of production cycle from pedal.
- Stop cycle from pedal, with rapid recovery of the production cycle.

3 / Basic features:



- 1 machining spindle, 1 linear axe.
- Pneumatic clamping(s) pneumatic self-centering with a clamping force of 2 tons into 8 Bars
- **Maximum machining or threading length: 250 mm.**
- Maximum diameter of thread tapping : TR 64 x 8
- Maximum movement speed of the linear axes: 10 meters / minute
- Couples to spindle : 1080 Nm
- Speed of Spindle: depending on production needs.
- CNC 2 axes.
- Brushless motors on linear axes of 12 Nm.
- Planetary gear and ball screw.
- Linear roller guide on precision rail.
- Vector Engine 20 KW to spindles.
- Transmission and reduction by toothed belt width 90 mm.
- Opening and closing of the heads by pneumatic cylinder.
- Lubricant pump with magnetic filter.
- Carters and safeties.
- CE Machine.
- Basis Weight 3400 Kg
- Maximum installed power 25 KW
- Voltage 400 Volts 50 Hz
- Air : 8 Bars



4 / Options :



- Chip Conveyor
- Tables for working and handling
- Take-off heads with carbide tools
- Une broche de travail de plus, **machine double....**
- Voltage and frequency on request
- Special tools.....
- Grinding machine